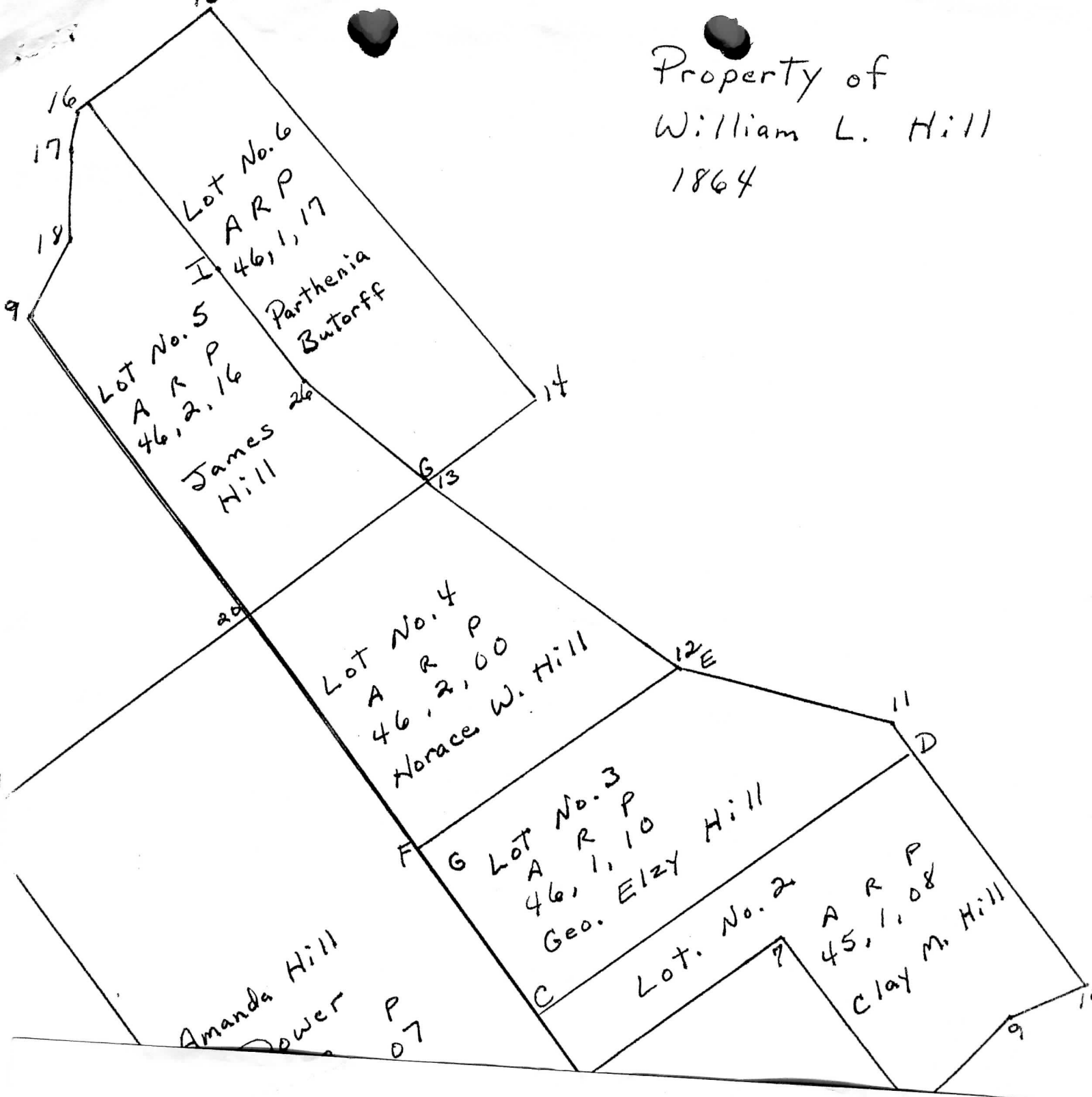


Property of
William L. Hill
1864



We the undersigned Commissioners appointed by an order of the Henry County Court at its February term 1864 to allot to the widow of W. L. Hill deceased her Dower in the land and slaves of W. L. Hill deceased and to allot to the children of said Hill the remainder of said land and slaves. We met at the late residence of said Hill in Henry County, Kentucky on the 2nd day of March 1864 having been duly sworn and proceeded to execute said order. We valued the slaves of said Hill at the sum of \$3,300.00.

1/3 of which to:

| | | |
|-------------------------------|-----------------|------------|
| Amanda Hill dower | \$ 1,100.00 | |
| Shares to children 366.66 2/3 | <u>2,200.00</u> | \$3,300.00 |

We allotted to the widow for Dower

| | |
|---------------------------|---------------|
| Negro man Moses | 200.00 |
| Negro man William | 325.00 |
| Negro Martha and child | 350.00 |
| Negro Emily | 250.00 |
| Negro Eliza | <u>150.00</u> |
| | 1,275.00 |
| Out of which to pay Heirs | <u>175.00</u> |
| | \$ 1,100.00 |

We allotted to Parthenia Buttorff (Late P.

| | |
|-----------------------------------|-------------------|
| Parthenia Hill negro man Sinclair | 350.00 |
| negro girl Caroline | <u>300.00</u> |
| | 650.00 |
| To pay to the Heirs | <u>283.33 1/3</u> |
| | \$ 366.66 2/3 |

We allotted to Eliza Hill

| | |
|----------------------|------------------|
| Negro girl Sarah | 275.00 |
| The widow to pay her | <u>91.66 2/3</u> |
| | \$ 366.66 2/3 |

We allotted to Horace W. Hill

| | |
|----------------------|------------------|
| Negro boy Willis | 300.00 |
| The widow to pay him | <u>66.66 2/3</u> |
| | \$ 366.66 2/3 |

We allotted to James Hill

| | |
|----------------------|------------------|
| Negro man George | 350.00 |
| The widow to pay him | <u>16.66 2/3</u> |
| | \$ 366.66 2/3 |

We allotted to George Elzy Hill

| | |
|---------------------|-------------------|
| Negro boy Owen | 200.00 |
| Buttorff to pay him | <u>166.66 2/3</u> |
| | \$ 366.66 2/3 |

We allotted to Clay M. Hill

| | |
|---------------------|-------------------|
| Negro boy John | 150.00 |
| Negro boy Essex | 100.00 |
| Buttorff to pay him | <u>116.66 2/3</u> |
| | \$ 366.66 2/3 |

We also ascertained by actual survey the quantity of land of which said W. L. Hill deceased possessed to be 420 3/4 acres out of which we allotted to Mrs. Amanda Hill widow of said Will L. Hill deceased for Dower 139 acres and 87 poles including the dwelling house, farm buildings in which we deem fully one-third in value of said land and which Dower is bounded as follows to wit. Beginning at (one on the plat) a stone corner to Smith's line thence S 19 1/2 E 214 7/10 poles to (A) a stone in Birch's line thence N 70 E 101 poles to (B) a stone in Moody's line thence S 18 W 214 poles to (20) a stone corner to Smith's thence S 70 E 10 62 poles to the beginning.

We divided the balance of this land among the Heirs of said W. L. Hill deceased according to quantity and quality as follows to wit.

We allotted to Eliza A. Hill lot No. 1 containing 50 acres and 12 poles and bounded as follows to wit. Beginning at (A) a stone corner to the Dower in Birch's line thence S 19 1/2 E 16 poles to (2) a stone corner to Birch thence N 70 E 12 1/10 poles to (3) a stone corner to Birch thence S 41 E 112 4/10 poles to (4) a stone in the center of the Smithfield Road thence with the road N 37 E 33 2/3 poles to (5) a stone corner to Moody thence N 18 W 93 1/3 poles to (B) a stone corner to the Dower thence S 70 W 101 poles to the beginning.

We allotted to Clay M. Hill lot No. 2 containing 45 acres and 48 poles and bounded as follows to wit beginning at (6) a stone in a line of the dower corner to Moody thence N 70 E 75 1/2 poles to (7) a stone corner to Moody thence S 19 1/2 E 67 2/10 poles to (8) a stone in the center of the Smithfield Road thence with the road N 62 1/2 E 36 poles to (9) a stone thence N 79 E 27 1/2 poles to (10) a stone corner to Moody and Cowherd thence N 19 1/2 W 88 poles to (D) a stone corner to lot No. 3 thence S 71 W 138 poles to (C) a stone in a line of the Dower thence S 18 E 23 1/2 poles to the beginning.

We allotted to George Elzy Hill lot No. 3 containing 46 acres and 50 poles and bounded as follows to wit. Beginning at (D) a stone to lot No. 2 thence N 19 1/2 W 10 poles to (11) a stone corner to Watkins thence N 57 W 65 1/3 poles to (E) a stone corner to lot No. 4 thence S 71 W 138 poles to (F) a stone in a line of the Dower corner to lot No. 4 thence S 18 E 63 poles to (C) a stone corner to lot No. 2 thence N 71 E 138 poles to the beginning.

We allotted lot No. 4 to Horace W. Hill containing 46 1/2 acres and bounded as follows. Beginning at (E) a stone corner to lot No. 3 thence N 57 W 4 poles to (2) a stone corner to Watkins thence N 32 3/4 W 93 1/3 poles to (13) the center of a pillar of stone at a water gap thence S 69 W 67 1/2 poles to (20) a stone corner to Smith and the Dower thence S 18 E 90 poles to (F) a stone in a line of the Dower and corner to lot No. 3 thence N 71 E 96 poles to the beginning.

We allotted lot No. 5 to James Hill containing 46 acres 106 poles and bounded as follows to wit. Beginning at (G) a stone and Hickory in a line of lot No. 4 and two poles from the corner a stone pillar at a water gap, thence N 31 3/4 W 46 poles to (H) a stone thence N 17 1/4 to 48 poles to (I) a stone thence N 21 W 58 poles to (16) a stone near a shop thence S 33 W 12 6/10 poles to (17) a stone on the bank of the creek, S 14 1/2 W 26 1/2 poles to (18) a stone thence S 45 W 32 poles to (19) a stone at a pillar of a water gap corner to Smith, thence S 20 1/2 E 108 2/3 poles to (20) a stone corner to Smith the Dower and lot No. 5 thence N 69 E 65 1/2 poles to the beginning.

We allotted lot No. 6 to Parthenia Butorff (late Hill) containing 46 acres and 57 poles and bounded as follows to wit. Beginning at (G) a stone and Hickory corner to lot No. 5 in a line of lot No. 4 thence N 69 E 42 1/3 poles to (14) a stone corner to Smith, thence N 21 1/2 W 152 3/4 poles to (15) a stone corner to Smith S 69 3/4 W 49 2/10 poles to (16) a stone near a shop thence with the lines of lot No. 5 S 21 E 58 poles to (I) a stone thence S 17 1/4 E 48 poles to (H) a stone thence S 31 3/4 E 46 poles to (G) the beginning and the said Commissioners having fully executed the division and allotment directed by said order of court beg to report the foregoing as the result of their labors.

March 24th 1864

C. T. Chilton }
Jos. F. Pryor } Coms.
I. P. Watkins }

Henry County Sct.

The foregoing report of the Commissioners dividing the land and slaves of W. L. Hill deceased and allotting dower to widow was filed in Court Mch 28th 1864 approved and ordered to record.

M. B. Pearce C.H.C.